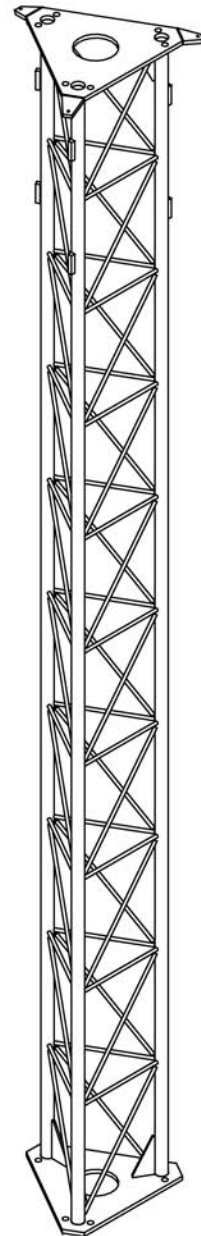
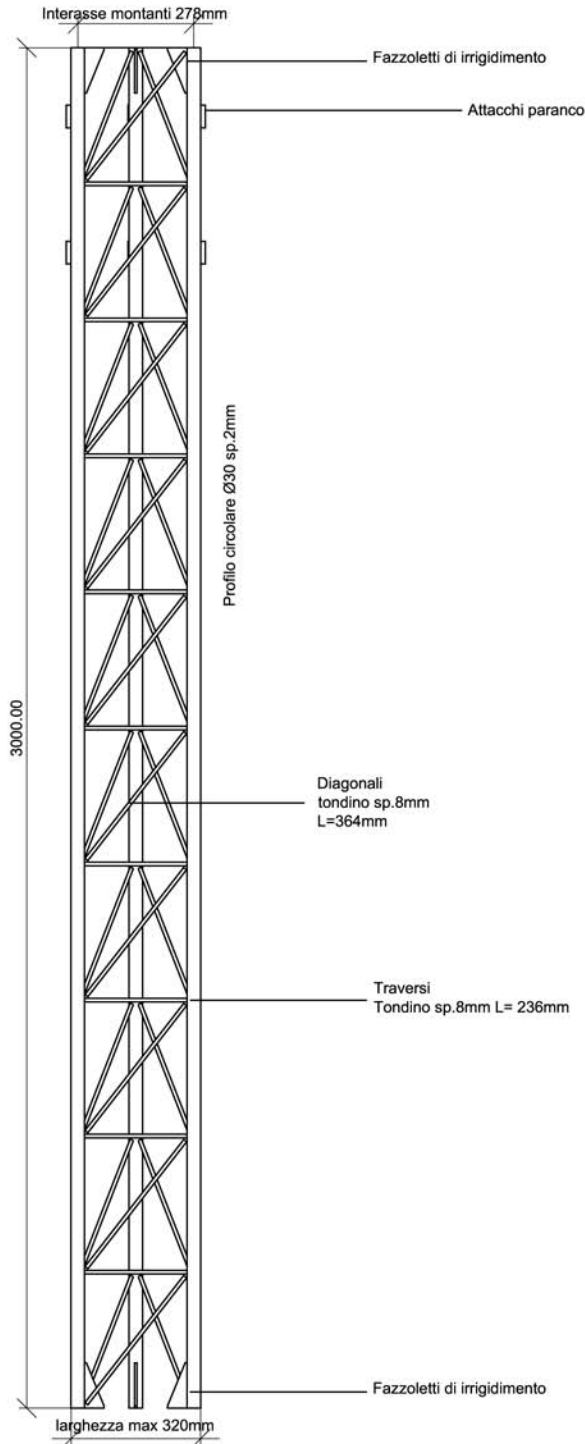
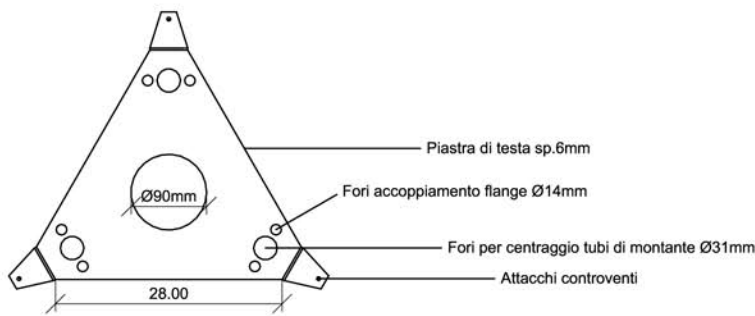
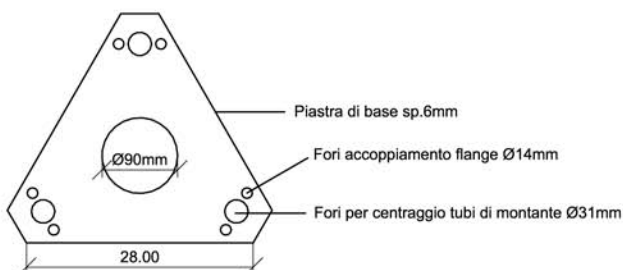


SCHEDA TECNICA
TRALICCIO TRIANGOLARE
MONTANTE 30mm
CODICE 135.0004.03



PESO = 30 KG



CARATTERISTICHE STATICHE SEZIONE
(3 TUBI Ø 30 - 2mm)

A = 5,28 cm²
J = 627 cm⁴
W = 27 cm

Tubi (montanti)	S 235 JR – EN 10025/95
Tondini (greche)	S 235 JR – EN 10025/95
Tipo di protezione	zincatura a caldo - UNI EN ISO 1461